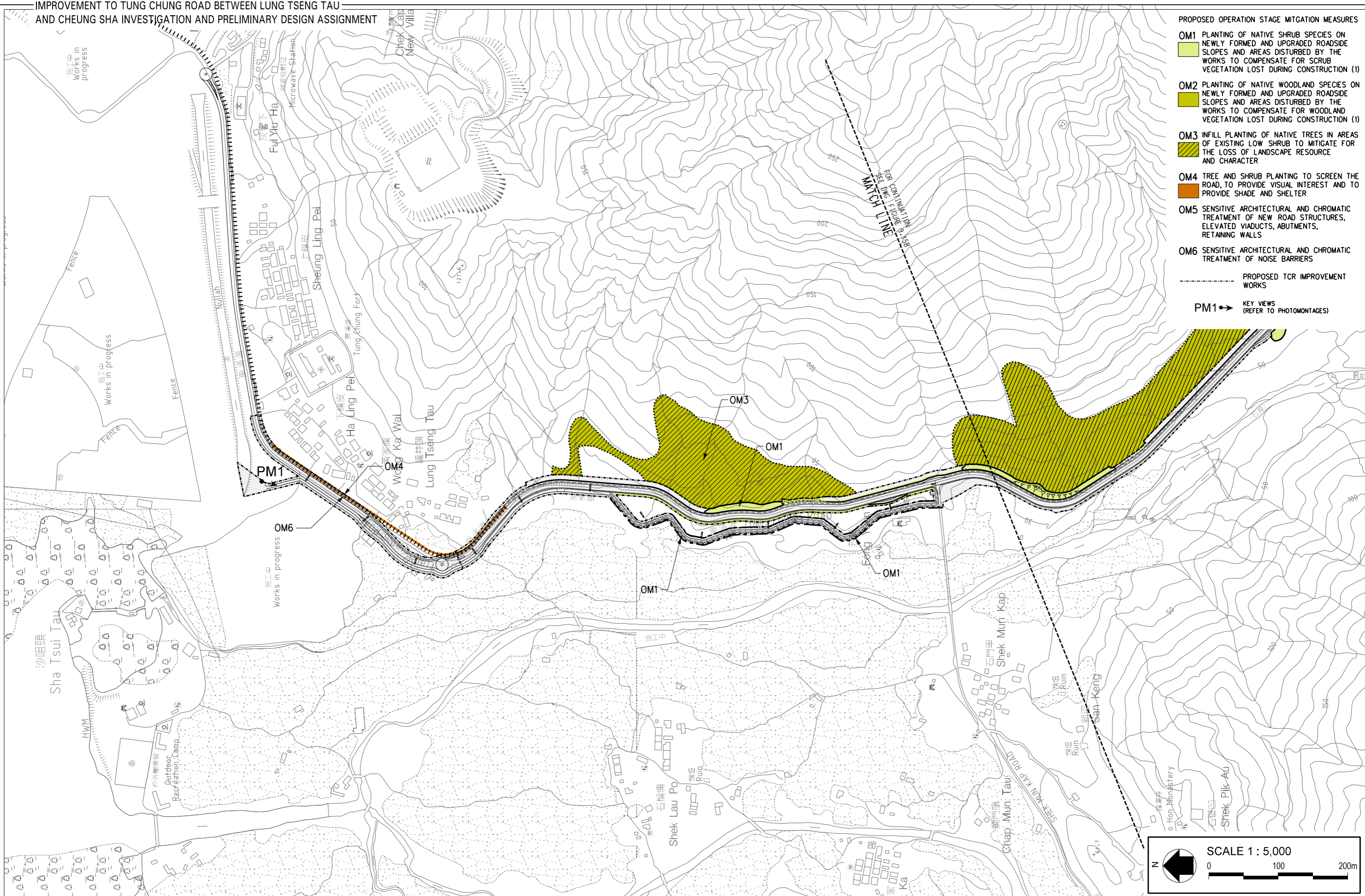


IMPROVEMENT TO TUNG CHUNG ROAD BETWEEN LUNG TSENG TAU AND CHEUNG SHA INVESTIGATION AND PRELIMINARY DESIGN ASSIGNMENT



- PROPOSED OPERATION STAGE MITIGATION MEASURES**
- OM1** PLANTING OF NATIVE SHRUB SPECIES ON NEWLY FORMED AND UPGRADED ROADSIDE SLOPES AND AREAS DISTURBED BY THE WORKS TO COMPENSATE FOR SCRUB VEGETATION LOST DURING CONSTRUCTION (1)
 - OM2** PLANTING OF NATIVE WOODLAND SPECIES ON NEWLY FORMED AND UPGRADED ROADSIDE SLOPES AND AREAS DISTURBED BY THE WORKS TO COMPENSATE FOR WOODLAND VEGETATION LOST DURING CONSTRUCTION (1)
 - OM3** INFILL PLANTING OF NATIVE TREES IN AREAS OF EXISTING LOW SHRUB TO MITIGATE FOR THE LOSS OF LANDSCAPE RESOURCE AND CHARACTER
 - OM4** TREE AND SHRUB PLANTING TO SCREEN THE ROAD, TO PROVIDE VISUAL INTEREST AND TO PROVIDE SHADE AND SHELTER
 - OM5** SENSITIVE ARCHITECTURAL AND CHROMATIC TREATMENT OF NEW ROAD STRUCTURES, ELEVATED VIADUCTS, ABUTMENTS, RETAINING WALLS
 - OM6** SENSITIVE ARCHITECTURAL AND CHROMATIC TREATMENT OF NOISE BARRIERS
- PROPOSED TCR IMPROVEMENT WORKS
 - PM1 → KEY VIEWS (REFER TO PHOTOMONTAGES)



LANDSCAPE MITIGATION MEASURES PLAN - OPERATIONAL PHASE